

EVERYTHING

A Worship Gospel Song

Music & Lyrics by MATS VISSER

A INTRO

♩ = 120

A

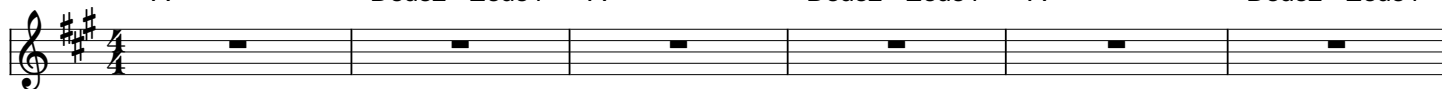
Dsus2 Esus4

A

Dsus2 Esus4

A

Dsus2 Esus4



B VERSE I

A

D/F# E/G#

D

E

A



1. Ev'-ry-thing I am, _____

ev'-ry-thing I see, _____

D

E

A

D

E

A

E/G#



ev'-ry-thing I have, _____

Lord, you are my king, _____

F#m

A/E

D

E

A

VERSE II



Lord, you're ev' - ry - thing!

2. Ev'-ry-thing I was, _____

D

E

A

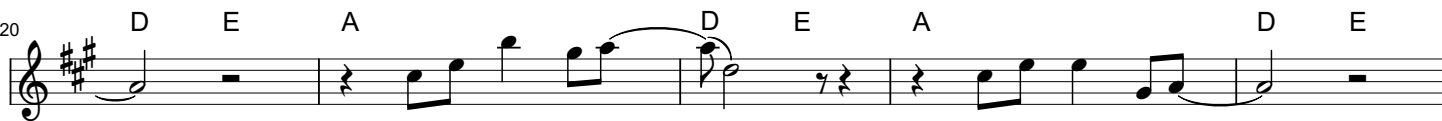
D

E

A

D

E



ev'-ry-thing I know, _____

ev'-ry-thing I love, _____

A

E/G#

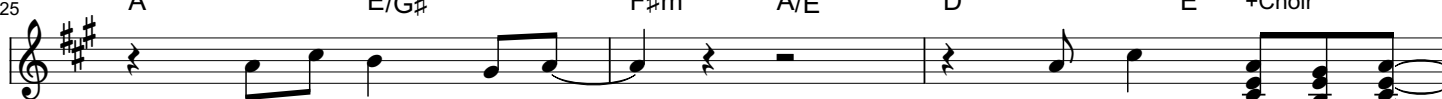
F#m

A/E

D

E

+Choir



Lord, you are my king, _____

Lord, you're Ev' - ry - thing. _____

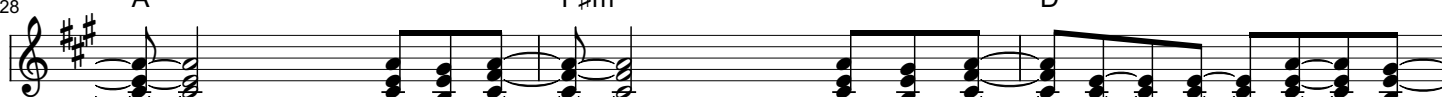
ff

C CHORUS

A

F#m

D



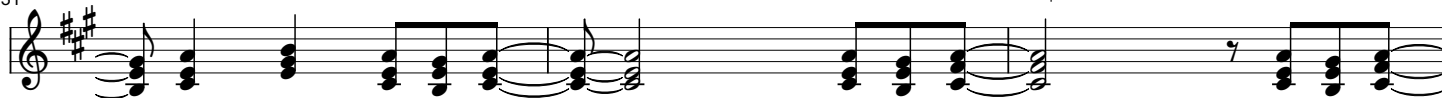
in my life _____

is reigned by _____ your love from high _____

E

A

F#m



a - bove! Ev' - ry - time _____

I need you _____

ev' - ry song _____

D

E

A



I sing, I sing, you sing, ev' - ry - day _____

I'm a - lone, _____

37 **F#m** **D** **E**
 you're the fi - re - storm that brings me home!

40 **A** **E/G#** **F#m6-5** **A/E** **Esus4** **Dsus2** **Esus4**
 Lord, you are my king, Lord, you're ev' - ry - thing!

43 **A** **D** **E** **A** **VERSE III**
 3.Ev'-ry-thing I say, ev'-ry-thing I pray,

47 **D** **E** **A** **D** **E** **A** **E/G#**
 ev'-ry-thing I can, Lord, you are my king,

51 **F#m** **A/E** **D** **E** **E** **CHORUS**
 Lord, you're Ev' - ry - thing in my life

54 **F#m** **D** **E**
 is reigned by your love from high a - bove! Ev' - ry - time

57 **A** **F#m** **D**
 I need you ev' - ry song I sing, I sing

60 **E** **A** **F#m**
 for you, Ev' - ry - day I'm a - lone, you're the fi -

63 **D** **E** **A** **E/G#**
 - re - storm that brings me home! Lord, you are my king,

66 **F** BRIDGE
Bm

F#m6-5 A/E Esus4 Dsus2 Esus4

Lord, you're ev' - ry-thing! You touched my__ soul__

69

A/C# D E/G# A

you take__ me__ home__ I'll al-ways come back__ to you__

72

Bm A/C# D E/G# A

You touched my__ soul__ you take me__ home!__

76

Bm A/C# D

You touched my__ soul__ you take__ me__ home__ I'll

79

E/G# A Bm A/C#

al-ways come back__ to you__ You touched my__ soul__ you take__ me__ home!__

82 **G** CHORUS
B

D E

Ev' - ry - thing__ in my life__

85

G#m E F#

is reigned by__ your__ love__ from__ high__ a - bove! Ev' - ry - time__

88

B G#m E

I need you__ ev'-ry song__ I__ sing,__ I__ sing__

91

F# B G#m

for you, Ev' - ry - day__ I'm a - lone,__ you're the fi -

94

E F# B F#/A#

re - storm__ that__ brings__ me__ home__ Lord, you are my king,__

H CHORUS
B

97 G#m B/F# F# E F#
Lord, you're ev' - ry - thing in my life_

100 G#m E F#
is reigned by your love from high a - bove! Ev' - ry - time_

103 B G#m E
I need you ev' - ry song I sing, I sing_

106 F# B G#m
for you, Ev' - ry - day I'm a - lone, you're the fi -

109 E F# B F#/A#
- re - storm that brings me home! Lord, you are my king, -

112 G#m B/F# F# E F# B F#/A#
Lord, you're ev' - ry - thing! Lord, you are my king, -

115 G#m B/F# F# E F# B
Lord, you're ev' - ry - thing!